



INSTALLATION INSTRUCTIONS

Thank you for purchasing this panel storage system. Please read the following instructions completely before commencing installation. If in doubt, please contact us or consult a qualified tradesperson.

IMPORTANT!

The panels have been designed to fit to a timber stud wall, with or without plasterboard. If you wish to fit panels to a brick or concrete block wall then first, you will need to attach timber support battens to the wall before installing.

TOOLS REQUIRED:

- Spirit level
- Tape measure & pencil
- Joist / Stud detector (for plasterboard walls)
- Power drill / screwdriver
- Safety goggles
- Fine tooth saw (if cutting panels)
- Straight edge / batten



Step 1

Determine where on the wall you want to position your panels. Many configurations are possible but the most popular is in a rectangular or square panel format. Locate the timber studs with a joist detector if required and mark their positions with a pencil line. We recommend fixing panels every 400mm (16") minimum, so if possible, centre the panels on the wall studs so that they are fully supported.

Tip: If you intend to hang heavy items (e.g. bikes) then you must ensure there are adequate fixing points to avoid panels over-flexing. See Heavy Duty Storage below.



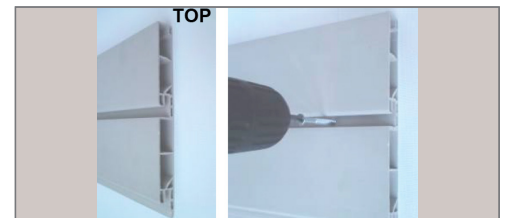
Step 2

Choose where on the wall you want the lowest panel to be and using a spirit level, draw a line across the wall to mark the bottom edge. Fit a temporary batten or straight edge to the wall below this line to act as a support guide for the first panel. Ensure the batten is fixed to at least 2 timber wall studs and is level.



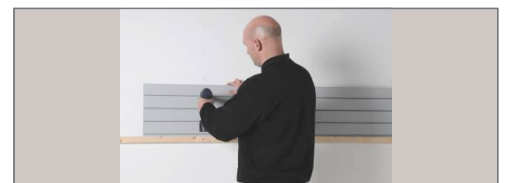
Step 3

Check to make sure the first panel is the correct way up (see photo) and align along the top of the support batten. Using the pencil lines as a guide, drill a pilot hole through the back of the centre groove into the wall stud. Drive a countersunk head screw into this hole and ensure it finishes flush with the surface of the groove (a power driver is recommended for this).



Step 4

Repeat for all remaining studs so that the first panel is securely fixed to the wall. Attach the second panel by inserting its bottom tongue into the top groove of the first panel and ensure it is flush and level. Check to align the ends and then drill and screw the panel to the wall as in step 3.



Scan the QR Code
for Easy Rack Shelf
Assembly Videos

**Video link for
QR code**

Step 5

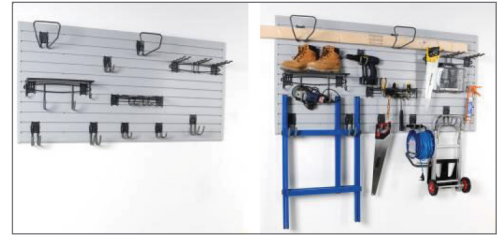
Continue to add panels as in step 4 until the section is completed.

You can now remove the temporary support batten. To finish the section, add edging strips to each side – these can be cut to length using a fine tooth saw. To fit, slide onto the end of each panel from the top or bottom and then gently tap into position.

Step 6

Your panel is now complete and ready to use! Attach storage hooks and racks by inserting the top of the bracket into the slat-wall groove at a slight angle and then slot into place. Racks are easy to slide along the grooves if the position needs to change.

Once you are happy with the rack and hook positions you can start to get organised!



CARING FOR YOUR SLAT-WALL

The panels are made from heavy duty PVC and once fitted only require occasional cleaning to keep them looking new. For best results use a mild detergent, non abrasive cloth and warm water. Do not use solvent based cleaners as this could damage the PVC surface.

Heavy Duty Storage

If you are planning to store heavy items onto the panels (e.g. bikes) then it is very important to position those hooks and racks over screw fixing points to avoid the panels over-flexing. If necessary, add extra screw fixing points during installation.

Extending your panel system

It is very easy to add extra panels if required to the top, bottom or sides of your existing panels

Tip: For extra versatility the racks and hooks can also be screwed directly to a wall. This is useful in areas where you cannot easily fit slat-wall panels. Simply screw each bracket to the wall using the pre-drilled holes and appropriate fixings.

Frequently asked Questions

1. How do I install Slat-Wall over concrete or brick walls?

You must first fit timber studs to a concrete or brick wall before installing the panels. We recommend using 50 x 25mm (2" x 1") battens at 400mm (16") centres xed with appropriate wall anchors.

2. Can I cut Panels?

Yes, you can easily cut the panels to create a custom fit - simply use a fine tooth circular table saw or hand saw. Make sure the visible front surface is uppermost when cutting.

3. Is Slat-Wall water proof / resistant?

Yes, it is fully waterproof and mould resistant.

4. How long does it take to install Slat-Wall

Once studs are located, it takes about 5 minutes per panel to install Slat-Wall correctly. We recommend 2 people install Slatwall to make it easier to align panels correctly.

5. How much weight can Slat-Wall hold?

The maximum weight load is entirely dependent on the quality of the wall structure and the number and spacing of screw fixing points. Panels have been designed to support typical domestic loads. If you are storing heavier items (e.g. bikes) then hooks must be fitted over screw fixing points to avoid panels over-flexing.

6. Where can I use Slat-Wall

Slat-Wall can be used in the garage, utility room, play room, workshop and other storage areas. It can even be used inside cupboards! Hooks and racks can also be used on our Wire Mesh panels and can be individually screwed to a wall if required.

7. How many hooks and accessories does Slat-Wall offer?

We currently offer 14 different hooks and racks to fit Slat-Wall panels with more accessories due soon.